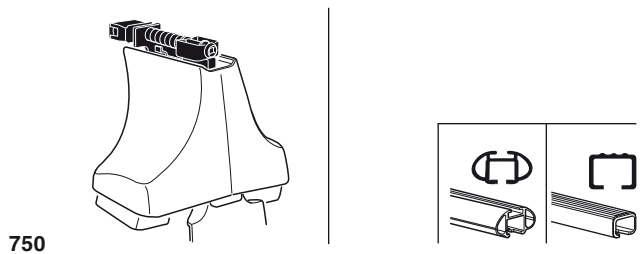
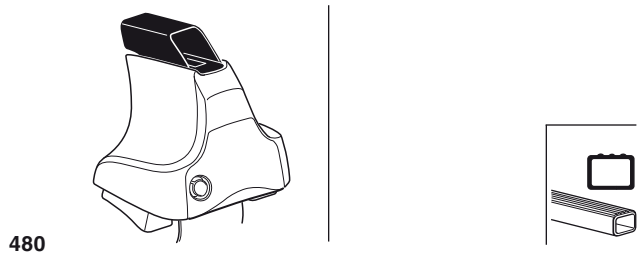
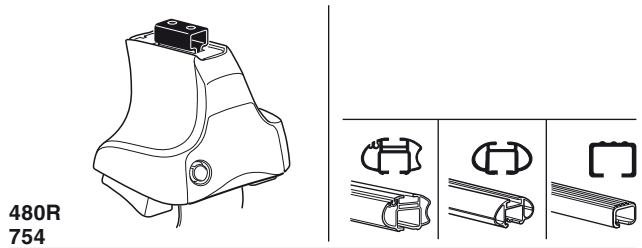


Kit 1057

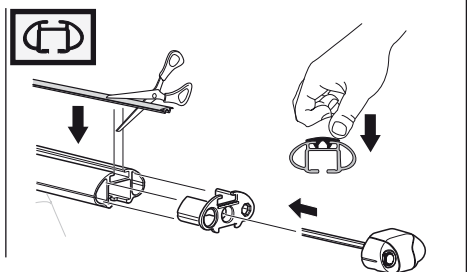
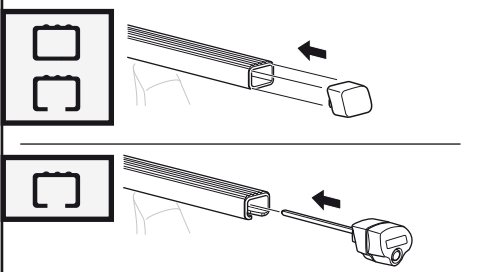
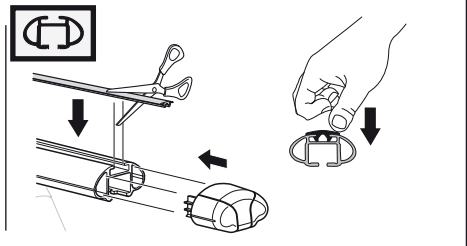
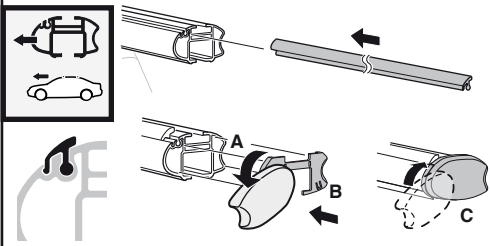
VOLKSWAGEN Passat Variant, 5-dr Estate, 88-96
VOLKSWAGEN Passat, 5-dr Wagon, *88-97

*North America



x2 x2 x2 x4	x2	x2 x2 x4 x4	x2 x2	x2	x2

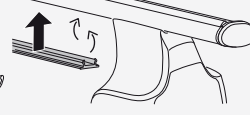
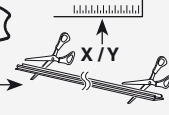
Kit



3



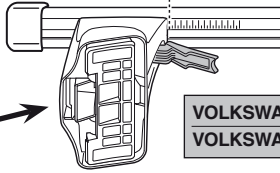
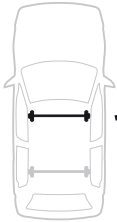
754



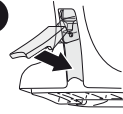
750



1

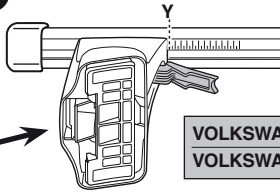


2

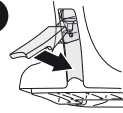


	X
VOLKSWAGEN Passat Variant, 5-dr Estate, 88-96	24,5
VOLKSWAGEN Passat, 5-dr Wagon, *88-97	24,5

1



2



	Y
VOLKSWAGEN Passat Variant, 5-dr Estate, 88-96	22
VOLKSWAGEN Passat, 5-dr Wagon, *88-97	22

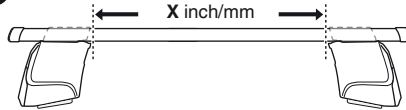
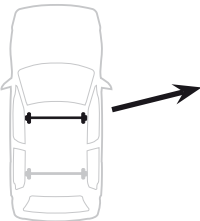


480R

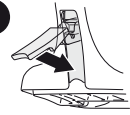


480

1

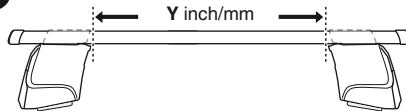
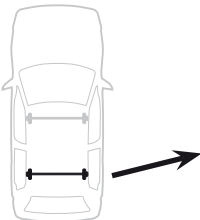


2

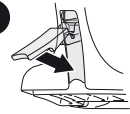


	X inch	X mm
VOLKSWAGEN Passat Variant, 5-dr Estate, 88-96	35 1/4"	896 mm
VOLKSWAGEN Passat, 5-dr Wagon, *88-97	35 1/4"	896 mm

1



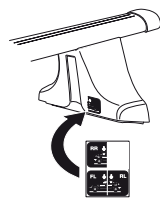
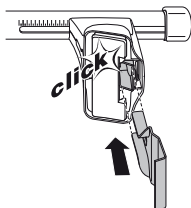
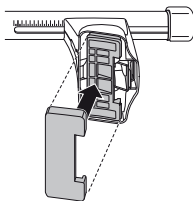
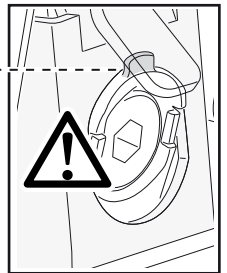
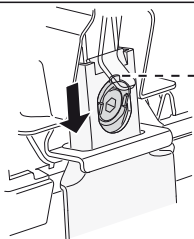
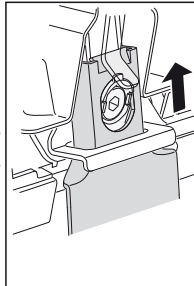
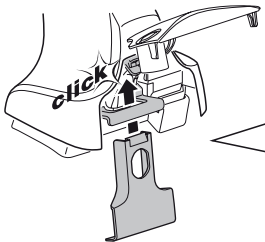
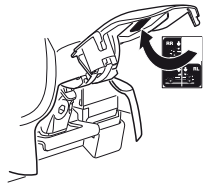
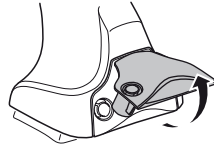
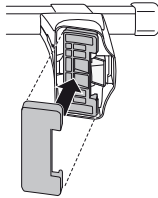
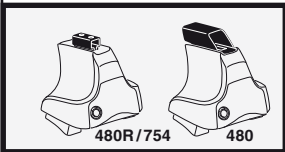
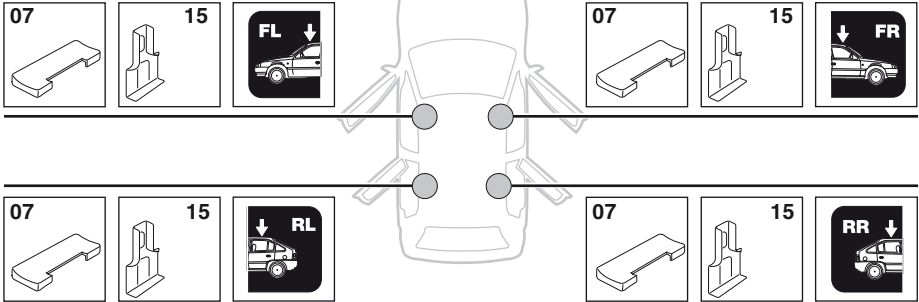
2



	Y inch	Y mm
VOLKSWAGEN Passat Variant, 5-dr Estate, 88-96	34 1/4"	871 mm
VOLKSWAGEN Passat, 5-dr Wagon, *88-97	34 1/4"	871 mm

4

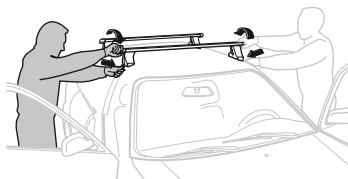
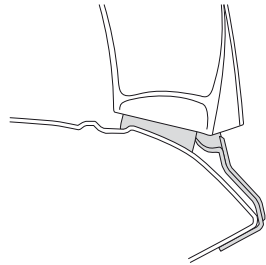
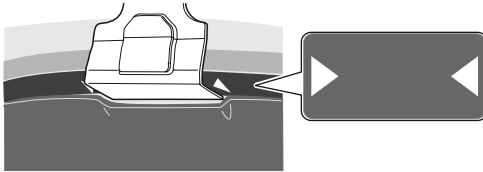
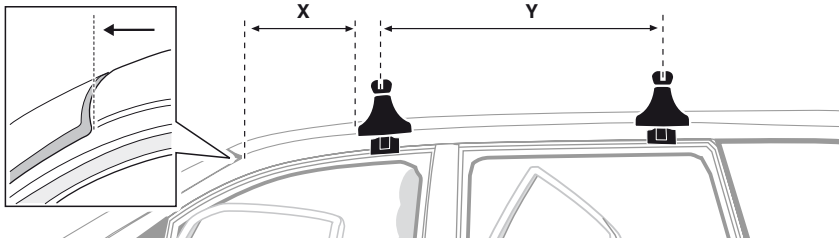
VOLKSWAGEN Passat Variant, 5-dr Estate, 88-96
 VOLKSWAGEN Passat, 5-dr Wagon, *88-97



5



	X mm	Y mm	X inch	Y inch
VOLKSWAGEN Passat Variant, 5-dr Estate, 88-96	300 mm	700 mm	11 3/4"	27 1/2"
VOLKSWAGEN Passat, 5-dr Wagon, *88-97	300 mm	700 mm	11 3/4"	27 1/2"



GB/US Tighten alternately

D Die Schrauben abwechselnd anziehen

F Serrer alternativement chaque côté

NL Afwisselend aan de linker- en de rechterkant aandraaien

I Alternare il serraggio delle viti

E Serrare alternativamente

PT Aperte alternadamente

S Dra åt växelvis

FIN Kierrä vuorotellen

EST Pinguldage vaheldumisi

LAT Pievelciēt pamīšus

LIT Užsukinėkite pakaitomis

PL Śruby dokręcaj naprzemiennie

RU Затягивайте попеременно

CZ Pokręťta багаžníka dokręcaj dokręcaj naprzemiennie.

SK Doťahujte striedavo

SLO Privijajte izmenično.

HR Naizmjenično zategnite

HU Egymástól függetlenül szorítandó

GR Σφιγγετε εναλλάξ

TR Dönüşümlü sıkın

中文 交替拧紧

한국어 번갈아 가며 조이십시오.

日本語 交互に締め付けてください。

ไทย ชันโนแบบสลับ

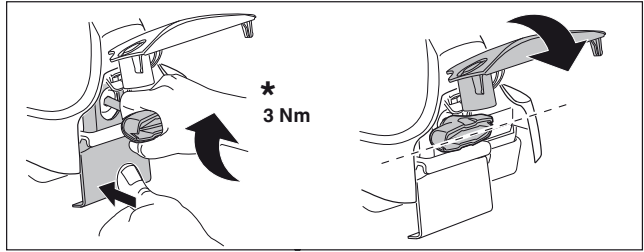
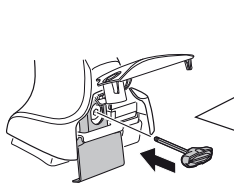
6



480R/754



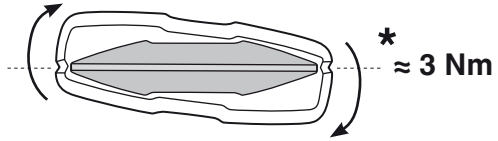
480



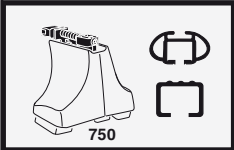
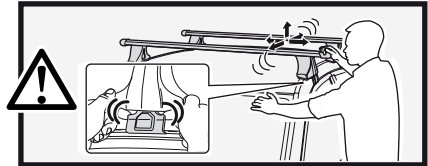
*
3 Nm



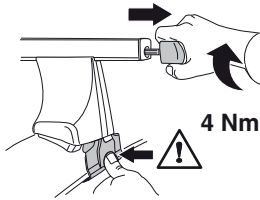
*



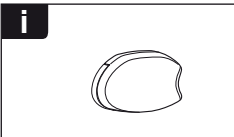
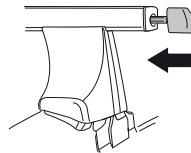
*
≈ 3 Nm



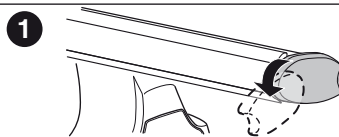
750



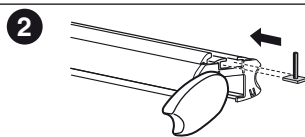
4 Nm



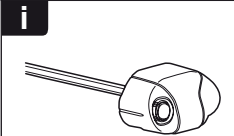
i



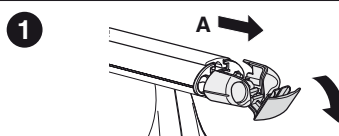
1



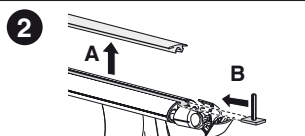
2



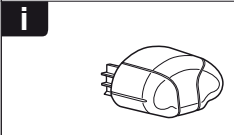
i



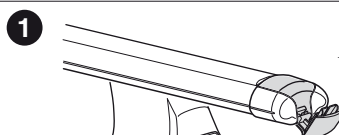
1



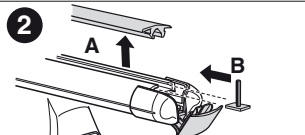
2



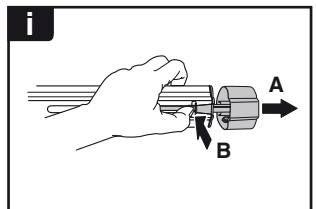
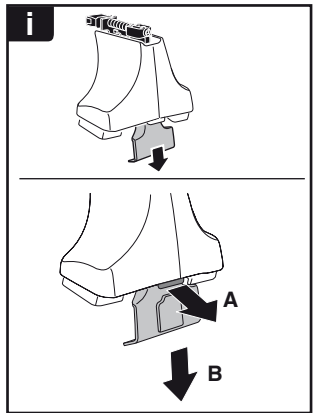
i



1



2



THULE
SWEDEN
**ONE
KEY
SYSTEM**



		(x4)
		(x6)
		(x8)
NA		(x10)
EUR		(x12)
ASIA		(x12)



WW ▶ Thule Sweden AB, Box 69, 330 33 Hillerstorp, SWEDEN
NA ▶ Thule Inc., 42 Silvermine Road, Seymour, Connecticut 06483, USA

info@thule.com
customer.service@thule.com

www.thule.com